



Extend Technologies' Business Intelligence Group

Business Intelligence (BI) gives businesses a competitive edge and more companies are asking how they can get started. Extend Technologies' BI Group have invested in developing a new breed of BI solutions that reduces project implementation times and increases functionality.

Established in 2006, Extend Technologies' BI Group began by identifying a major gap in the market. That was; traditional SAP BI implementations are either concentrated on standard content with its lack of functionality, or embark on costly and complex custom developments.

Combining pre-configured solutions with skilled SAP and Microsoft consulting teams, your Extend Technologies' BI project will have a greater focus on value added components that achieve tangible business benefits and are unique to your business.

With the goal in mind of improving the quality and lowering the cost of your BI project, Extend Technologies' BI solutions will allow your business to move at the speed of information. Getting the right information into the right hands at the right time.

Our Fast Starts to BI

Focusing projects away from custom builds toward pre-configured building blocks has enabled Extend Technologies to package up our SAP BI offerings for a fast project start.



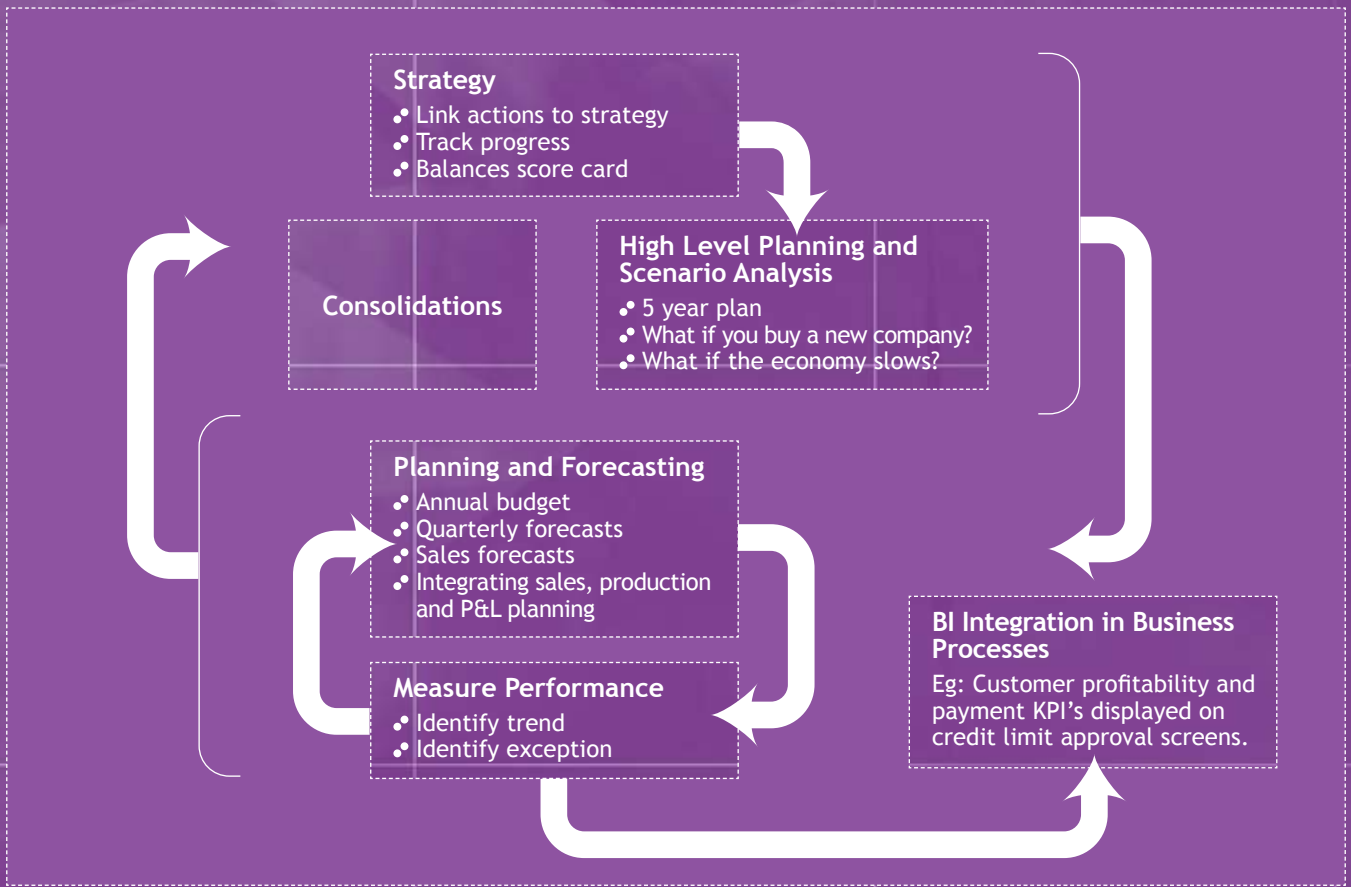
X10.BI Suite

Taking the best parts of SAP's 'standard content' and BI7 functionality and combining it with current Enterprise Data Warehousing methodologies makes up Extend Technologies' X10.BI Suite. The X10.BI Suite provides pre-configured solutions for the major SAP financial, logistics and HR modules. These can be implemented together or individually. However, they all have the following standard inclusions:

- Core Data Warehouse solution
- Queries for major reporting requirements
- Formatted reporting examples
- Interactive dashboard examples
- Documentation of the solution
- End user training
- Customer specific reporting and visualisation consulting

The X10.BI Suite provides the following solution benefits over traditional SAP 'standard content' implementations:

- A Data Warehouse layer that stages and transforms the data at a document level
- A foundation that can meet future requirements without costly re-development
- Access to document level information within the Data Warehouse for ad hoc reporting and to analyse variances
- Islands of information are integrated by design, allowing analysis, reporting and planning across SAP modules
- Easier to maintain, reconcile and ensure integrity of data



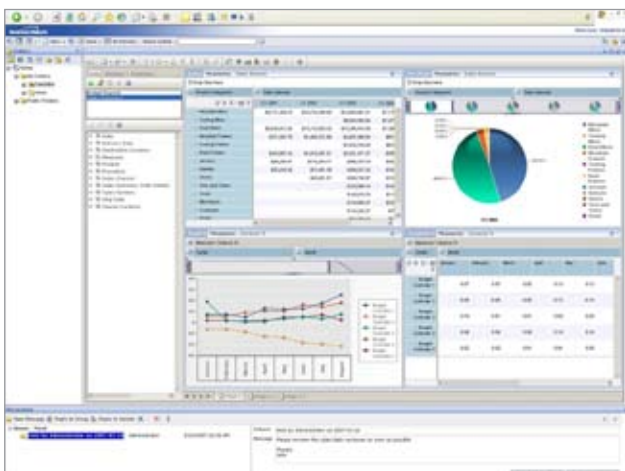
SAP and Business Objects A Powerful Combination

The combination of SAP and Business Objects creates the most complete and functionally rich Business Intelligence solution available from any vendor.

SAP centric customers will continue to benefit from the BI7 Data Warehouse with strong integration to the ERP, data integrity, security and lower TCO. Combining Business Objects greatly improves end user experience with enriched functionality and increased flexibility to work with many structured and unstructured data sources.

SAP's Business Intelligence solutions provide the following functionality:

- Strategy management
- High level driver based planning and business modelling
- Consolidate financial information from multiple companies and business structures
- Control the budgeting and forecasting process
- Flexible costing and profitability analysis
- Data Warehousing - the foundation of a good BI solution
- Integration of multiple data sources
- Master data management and data quality
- High quality formatted reporting
- Flexible analytical reporting
- Interactive visualisations through dashboards and score cards



Our BI Consulting Services

Implementing the new breed of Business Intelligence solutions requires a greater level of both business and technical skills.

Extend Technologies' BI Group have specialists in three key BI consulting areas:

BI Data Warehouse Consulting

Extend Technologies has an experienced SAP BI7 Data Warehouse team, with many of the team having backgrounds in SAP ERP as functional and technical consultants. The combination of extensive SAP ERP knowledge and strong BI data modelling skills have enabled the team to develop customer specific Data Warehousing solutions, following a common enterprise Data Warehousing approach.

Our Data Warehouse experience includes retail implementations with over four terabytes of data, and supply chain reporting solutions combining information from seven different ERP systems.

In addition to supporting traditional BI applications, we have also used BI7 Data Warehouse solutions as a central data hub. This provides structured data to support business processes and to interface information between systems.

BI Reporting & Visualisation Consulting

Extend Technologies' reporting and visualisation team is made up of business focused reporting analysts with skills in finance, logistics and supply chain management, supported by technical experts. Our reporting and visualisation solutions available include:

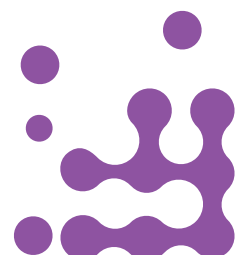
- Formatted reporting
- Self-service ad hoc reporting
- Analytical slice / dice and drill down
- Interactive dashboards and score cards
- Option of NetWeaver, SharePoint or Business Objects Info View Portal
- Analytical reporting using Excel
- Live office integration into MS office products
- Reports emailed to users and available via mobile devices

Our partnerships with SAP, Business Objects (an SAP Company) and Microsoft ensure you get the best information delivery strategy for your business.

BI Corporate Performance Management Consulting

Our corporate performance management team are business focused BI professionals from financial backgrounds, supported by technical experts. We offer the following consulting functions in corporate performance management:

- Budgeting and forecasting
- Driver based planning
- Financial consolidations
- Strategy management, balance score card
- Costing and profitability analysis

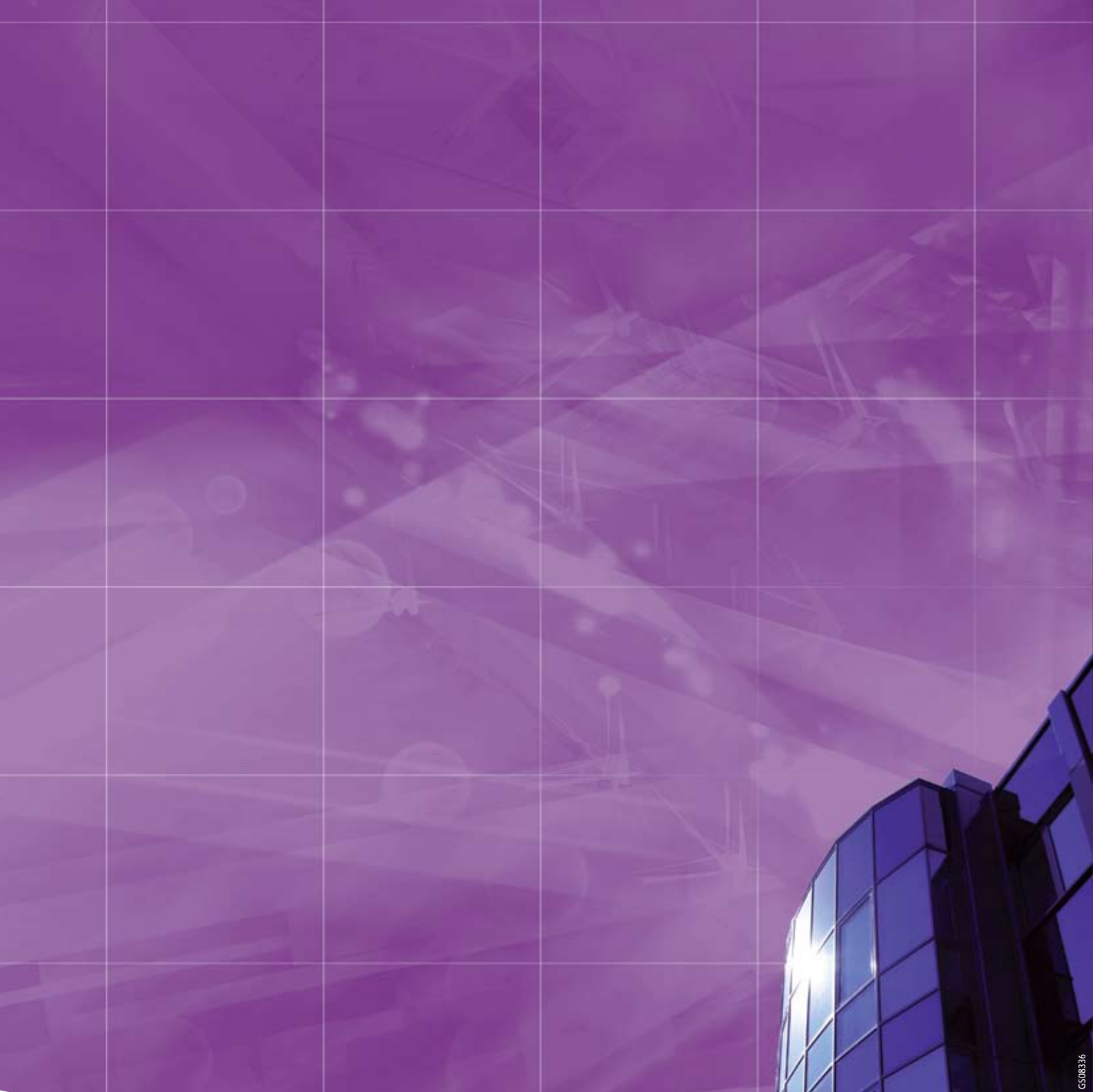




What Makes Us Different

Companies that leverage, exploit and maximise their information assets have a strategic advantage over their competitors. Choosing Extend Technologies' BI Group also provides the following advantages:

- A dedicated team - focused on providing Business Intelligence solutions
- Investing in solutions - the X10.BI Suite provides core BI solutions for the major business processes, this is completed by a range of advanced solutions to enable tailoring to customer requirements
- Extend invests in its consultants - with on going training in solutions, business processes, implementation methodology, and technologies
- Lower cost, lower risk - the X10.BI Suite can be implemented in weeks due to the major components already built, tested and documented
- Increased return on investment - with the core solution delivered 'out of the box' your consulting dollars are focused on value added enhancements and a business focused end user solution
- One stop shop - Extend Technologies provides their customers with the benefit of sourcing all their SAP related services from one provider:
 - SAP licences
 - Functional consulting: ERP, CRM, HR, APO
 - ABAP, java and .NET development
 - NetWeaver and SharePoint portal solutions
 - Basis and infrastructure
 - Hardware procurement
 - Helpdesk and proactive support
- Extend has a spirit of innovation - by using the skills that exist across Extend and our partners we are able to come up with innovative solutions



G5003336

Contact Details

BRISBANE

PO Box 2343, Fortitude Valley QLD 4006
5 Florence Street, Newstead QLD 4006
T: 07 3308 9400 F: 07 3257 2323

SYDNEY

Level 8, 124 Walker Street, North Sydney NSW 2060
T: 02 8908 4200 F: 02 9460 3606

MELBOURNE

244 Moray Street, Sth Melbourne VIC 3205
T: 03 9685 3900 F: 03 9645 9470



www.extendtechnologies.com.au
Smart Solutions. Bankable Results.